

## Single Use Systems and Fluid Transfer Technologies

### LENNOX+YOU™

At Lennox we leverage our industry knowledge, in combination with a hands on support approach, to provide best in class solutions. We work with your engineers to understand your application and provide not only the most cost effective solution but the right solution for your needs.

#### “From Blank Page to Production...”

Our expertise in aseptic peristaltic pumping, fluid path systems and single-use technology have been combined to deliver **NEXUS®** a Lennox Process. Through collaboration with your engineers we design, prototype, assemble and package the bespoke **NEXUS®** assembly, providing total confidence and reassurance that your single-use system meets compliance, repeatability and performance parameters.

Lennox carries a bioprocess specific portfolio of complimentary and industry aligned components to ensure we are a total solutions provider and meet your critical fluid transfer requirements. Providing customers with a URL where they can manipulate the 3D model of their prototype allows for speedy alterations to be made and a rapid sample assembly turnaround in fewer than ten days.



#### BioPharmaSil®

- Lot Traceable
- Certificate of Conformity
- Post-cured to ensure low leachables and stable flow
- Excellent Biocompatibility
- Free from cross linked by-products
- Free from PCBs
- Low spallation
- Predictable pump life



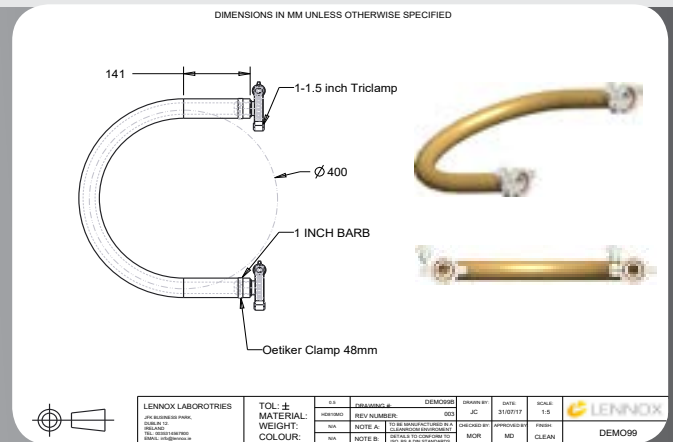
#### **NEXUS®** a LENNOX process

- Simplify your production operations
- Lower your cost of GMP manufacturing
- Reduce process validation
- Minimise your supply chain
- Total flexibility in design
- Achieves compliance and repeatability

## NEXUS<sup>®</sup> 3 Step Process

### 1. NEXUS<sup>®</sup> Design

In partnership with your engineers, a Lennox BioProcessing specialist will create a single-use system designed to meet your specific requirements. A unique technical drawing incorporating relevant bills of material and supporting documentation completes the design phase.



### 2. NEXUS<sup>®</sup> Prototype

Prior to prototype our engineers provide you with a URL to access a 3D model of your design, allowing you to manipulate the assembly and ensure that it meets your specification. A rapid prototyping process is initiated to produce working samples for immediate evaluation and functionality testing.



### 3. NEXUS<sup>®</sup> Assembly and Packaging

The single-use system will be assembled, labelled and packaged in a controlled ISO certified environment according to cGMP protocols. Additional labelling for gamma sterilisation will be applied as required.



**Lennox**  
**John F. Kennedy Drive**  
**Naas Road, D12 FP79**  
**Dublin, Ireland**

**Lennox.ie**  
**Tel . 01 460 7600**  
**Fax. 01 450 7906**  
**Email. customerservice@lennox.ie**

